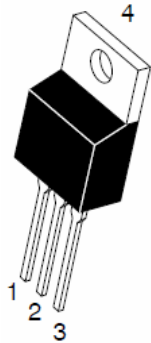
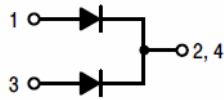


TO-220AB  
TSR / & 7



ITO-220AB  
TSR / & F



### Features

- ‡ \$GYDQWFHICQFK WHFKQRORJ\
- ‡ /RZRUZDYGWDJH GURS
- ‡ /RZRZIDRVVHV
- ‡ +LJHILFLHQF\ RSHUDWLRO
- ‡ /HDGH)HLQLVK &RPSOLDQW

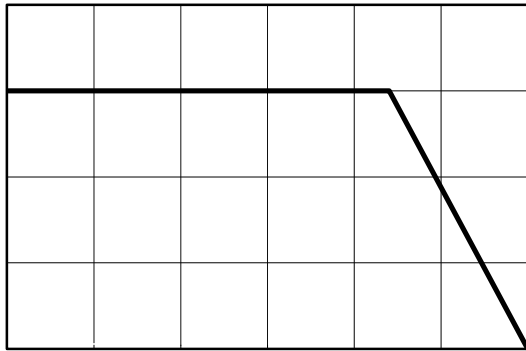
### Applications

- ‡ '&' & RQYHUWHUV
- ‡ \$&' & \$GDSWRUV
- ‡ 6ZLWFKRQISXSSOLHV
- ‡ )UHHZKH'HLQIQJ

Maximum ratings and electrical characteristics (T<sub>J</sub> = 25°C unless



RATINGS AND CHARACTERISTICS CURVES



7 F & DV H<sup>R</sup> & 7 H P S

Figure1: Current Derating, Case

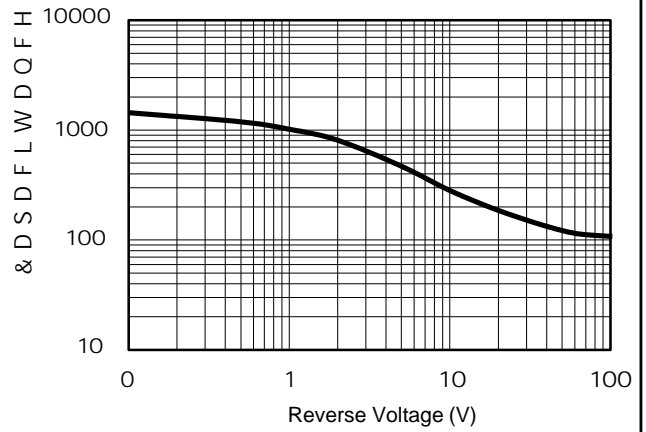
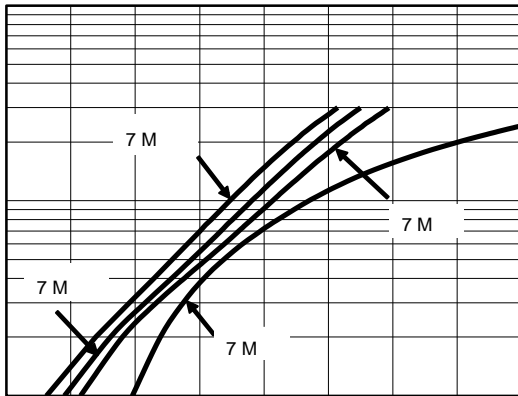
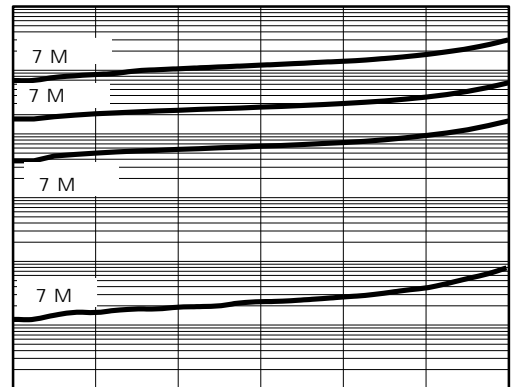


Figure2: Typical Junction Capacitance



9 I , QVWDQWDQHRXV )RUZDUG

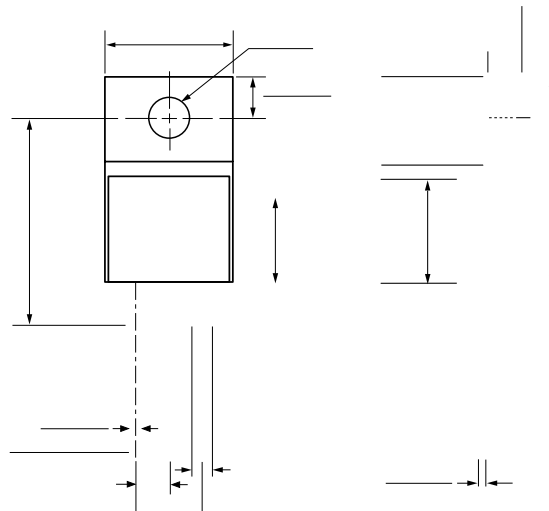
Figure3: Typical Forward Voltage

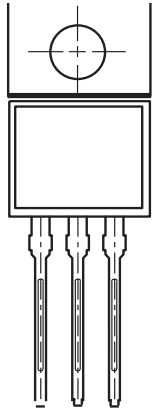


9 ROWDJH9 5 9 5HYHUVH 9 ROWDJH 9 ROWV

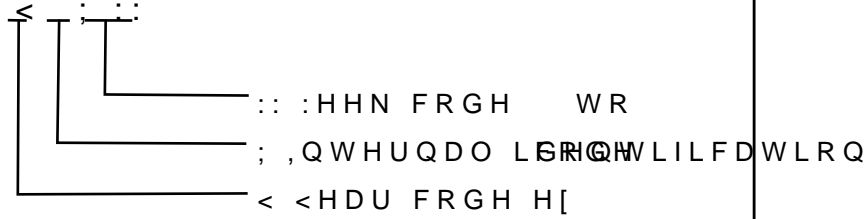
Figure4: Typical Reverse Current

# PACKAGE OUTLINE DIMENSIONS

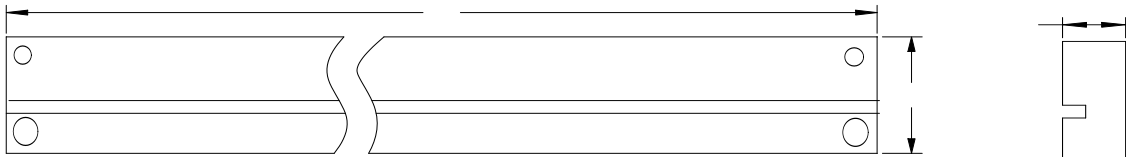




: &RPSDQ\ V WUDGHPDUN  
 3URGXFW 765 G/HO&7 RU 765 &7)  
 3'& LQIRUPDWLRQ



7XEH 'LPHQVLRQV



,QVLGH %R[

2XWVLGH %R[

12	81,	7XEH 'LPHQVLRQV			,QVLGH %R[			2XWVLGH %R[		
6LH	PP	\$	%	&	/	:	+	/	:	+
47<	3&6	3&6 7XEH			6PDOO&7WDXJH3&6 WXE&7RWD			3&6 FDU&7RWD		
1RWH		7ROHUDQF&7PP" PP			PP" PP			PP" PP		