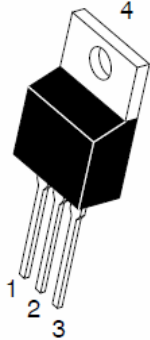
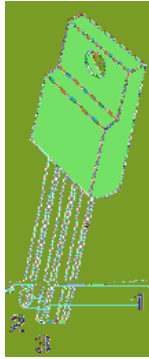


7 UHQFK 026 %DUU'LHU 6FKRWWN\ 5H

TO-220AB
TSR / CT



ITO-220AB
TSR / CTF

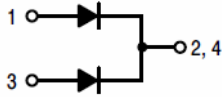


Features

- ‡ \$GYDQWUHQFK WHFKQRORJ\
- ‡ /RZRUZDWRGWDJH GURS
- ‡ /RZRZURVVHV
- ‡ +LJHILFLHQF\ RSHUDWLRO
- ‡ /HDGH)HLQLVK &R#6OLDQW

Applications

- ‡ '&' &RQYHUWHUV
- ‡ \$&'&GDSWRUV
- ‡ 6ZLWFKRZHXSSOLHV
- ‡)UHHZKH'HLRGLJ



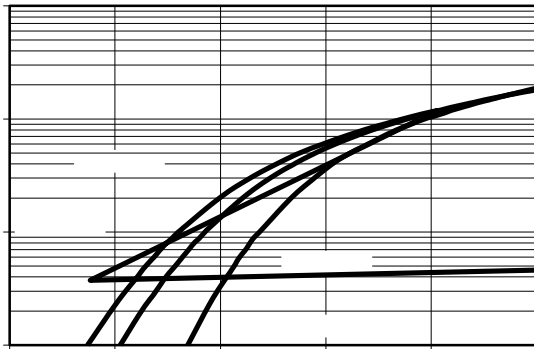
Maximum ratings and electrical characteristics (T_J = 25°C unless otherwise noted)

3DUDPHWHU	6\PERO	/LPLW	8QLW
0D[LPLXPHSHVSHUNYHYURQHW DJH	9550		9
0D[LPLXPYHURJHJZDUG UFXJWHHJWG	,) \$9		\$
GHYLFH			
3HDN IRVZDUEBUUHQW VLKDOHQH ZDYH	,)60		\$
VXSHULPSRVHGRRCGUDRWGHG			

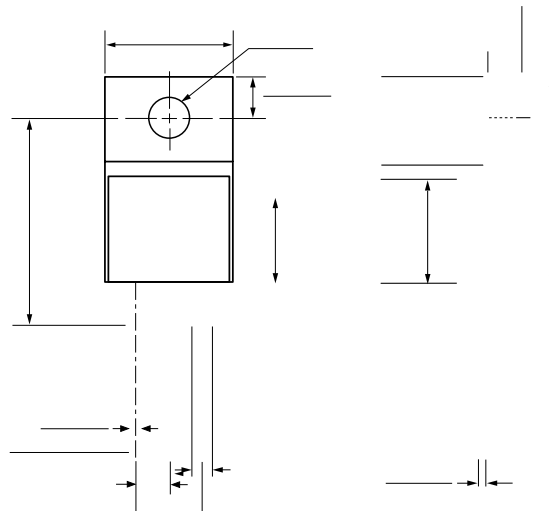
MSXHQ65RQ

1RWHV
 3XOVH WHVWSXOVH ZLGWK GXW\F\FOH
 3XOVH WHVW 3XOVH ZLGWK 0 PV

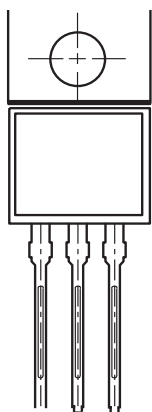
RATINGS AND CHARACTERISTICS CURVES 7\$ f& XQOHVQRWKBUZLVH



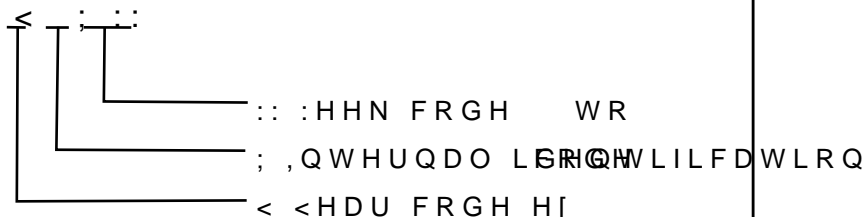
PACKAGE OUTLINE DIMENSIONS



0DUNLQJ ,QIRUPDWLRQ

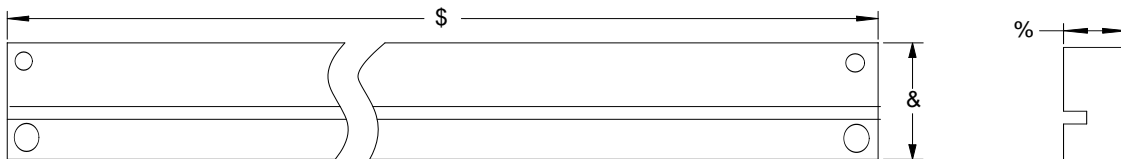


7 : &RPSDQ\ V WUDGHPDUN
 8 3URGXFW 765 &7) 7RU 765 &7)
 9 3' & LQIRUPDWLRQ



3DFNDJLQJ ,QIRUPDWLRQ

7XEH 'LPHQVLRQV 'RXEOH ZDIHU



,QVLGH %R[

2XWVLGH %R[

3DFNDJLQJ ,QIRUPDWLRQ

12	81,	7XEH 'LPHQVLRQ			,QVLGH			2XWVLGH %R[
6LH	PP	\$	%	806A0 /	:	+	/	:	+	
47<	3&6	3&6 7XEH			6PDO SHFWDJH3&6 WXEORWDO			3&6 FDUERGLWDO		
1RWH		7ROHUDQFPP"PP			PP"PP			PP"PP		